



18v X2 LXT[®] Lithium-Ion (36v) Brushless Cordless 2.1 Gallon HEPA Filter Dry Dust Extractor/Vacuum, Tool Only

Model XCV07ZX

18v X2 Brushless Motor for Optimized Dust Management Performance



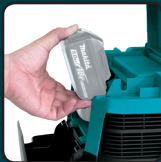
POWER

Makita BL™ Brushless motor delivers 74 CFM using two 18V LXT[®] batteries (batteries not included)



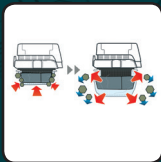
EFFICIENCY

Efficient three stage HEPA filtration system captures 99.97% of particulates .3 microns and larger



RUN TIME

Up to 75 minutes of continuous run time on low setting and 40 minutes on high setting



DURABILITY

Filter cleaning system is designed to maintain optimal suction efficiency and longer filter life



LXT[®] X2 18V + 18V 36V BRUSHLESS

FEATURES

- Filter cleaning system is designed to maintain optimal suction efficiency and longer filter life
- Efficient BL™ Brushless motor is electronically controlled to optimize battery energy use for up to 50% longer run time per charge
- The BL™ Brushless Motor eliminates carbon brushes, enabling the BL™ Motor to run cooler and more efficiently for longer life
- Precision lightweight motor components and efficient air ducting produce an overall weight of only 18.4 lbs with batteries (batteries not included)
- Oversized on-off switch for operator convenience
- Motor chamber constructed of quality sound-absorbing materials for quiet operating sound levels of 66 dB(A)
- Variable speed control dial for a variety of applications

SPECIFICATIONS

Continuous Use (max, in minutes)	75 min.
Air Flow Rate	74 CFM
Static Water Lift	36"
Working Sound Level	66 dB(A)
Gross Container Size	2.1 gal.
HEPA filters available	Yes
Battery	2X 18V LXT [®] Lithium-Ion
Net Weight (with battery)	18.4 lbs.
UPC Code	088381-840996

STANDARD EQUIPMENT

- Anti-Static Hose 1" X 11' (195433-3)
- Tool Cuff Adapter, 22mm for 1" Hose (417765-1)
- Tool Cuff Adapter, 24mm for 1" Hose (424379-9)
- Tool Cuff Adapter, 38mm for 1" hose (417766-9)
- Plastic Disposal Bag, 10/pk (195432-5)
- HEPA Filter (197166-6)
- Damper Filter (423398-2)
- Pre-Filter (195553-3)

OPTIONAL ACCESSORIES

- Anti-Static Hose 1-1/2" x 8' (195434-1)
- Curved Tube (192562-3)
- Straight Tube (192563-1)
- Crevice Tool (410306-2)
- Floor Nozzle (122512-4)

All specifications subject to change without prior notice. All models and accessories subject to stock on hand. The Makita Teal Color is the trade dress of Makita Corporation and is protected under common law and registered with the U.S. Patent and Trademark Office

Makita offers a wide variety of accessories. For a complete listing, please refer to the Makita General Catalog or visit our website at makitatools.com, or call 1-800-4MAKITA.