

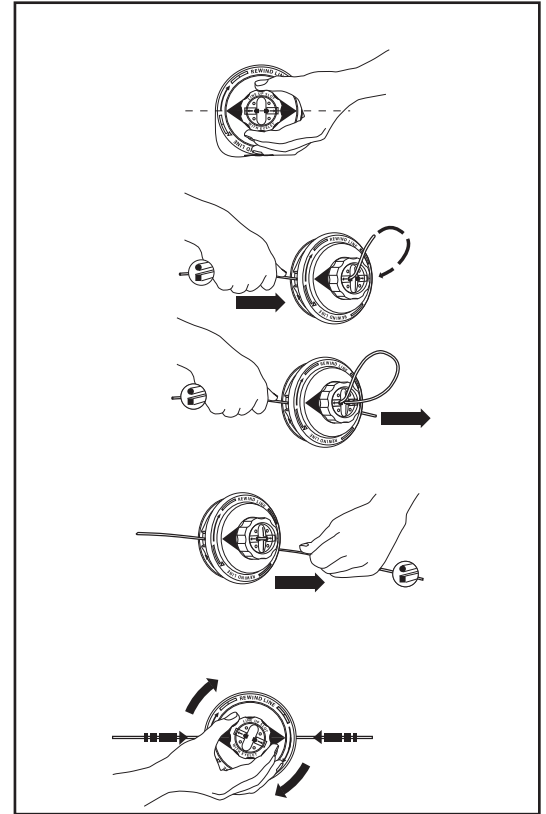


T-01753A, T-02917

BUMP & FEED TRIMMER HEAD

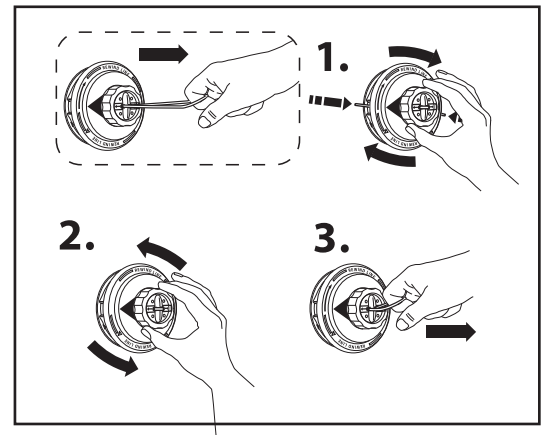
LINE LOADING INSTRUCTIONS:

- (1) Stop the engine. Make sure start/stop switch is in the off position.
- (2) Align arrow on spool with eyelets on housing.
- (3) Line loading is easier if the end of the line is round and cut at an angle to help guide through the trimmer head.
- (4) Insert two ends of one piece of nylon trimmer line into holes on top of spool. Or insert one end of trimmer line into eyelet on the side of housing, feed through hole on top of spool and then re-insert into second hole on top of spool. Push line into holes until line feeds through eyelets on side of housing.
- (5) Push line into holes feeding through eyelets on side of housing until equal length on both sides.
- (6) Hold housing securely and turn spool clockwise to wind line into spool.



REMOVAL OF LINE FROM HEAD:

- (1) Hold housing securely and turn spool clockwise until remaining line retracts into housing, and turn back and forth to relieve line stress.
- (2) Grasp loop on top of spool and pull remaining line from spool



HEAD DISASSEMBLY AND ASSEMBLY:

Disassembly:

- (1) The trimmer head can be disassembled for replacement of worn parts and/or loading of trimmer line while disassembled.
- (2) To disassemble; Press the tab on the side of the housing.
- (3) Rotate the cover clockwise to unlock.
- (4) Remove the cover.
- (5) Take care not to lose any parts.

Assembly:

- (1) Align the arrow on the housing with arrow on the cover.
- (2) Assure all the tabs slide into the cover.
- (3) Rotate the cover counter clockwise to lock it into place.

