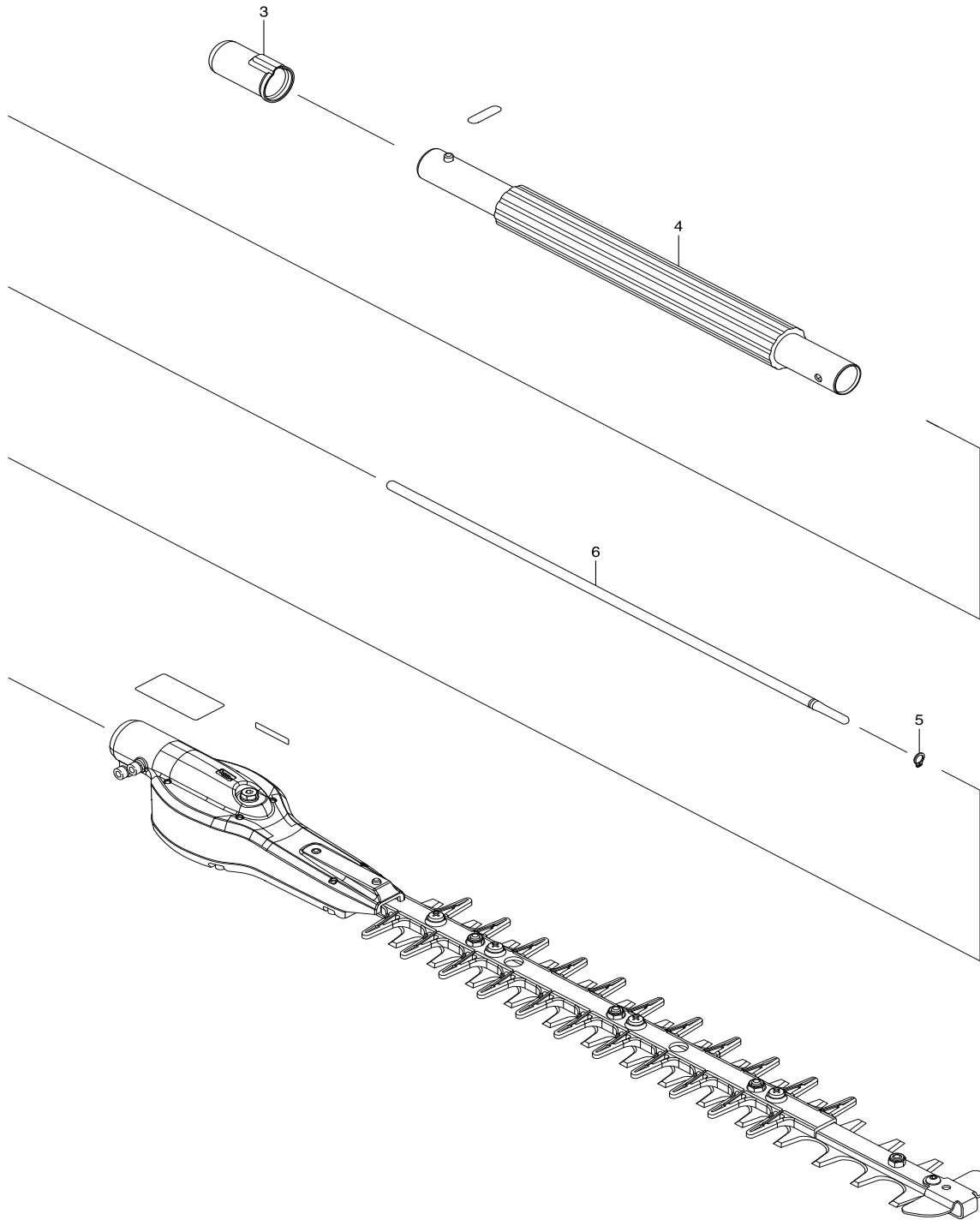


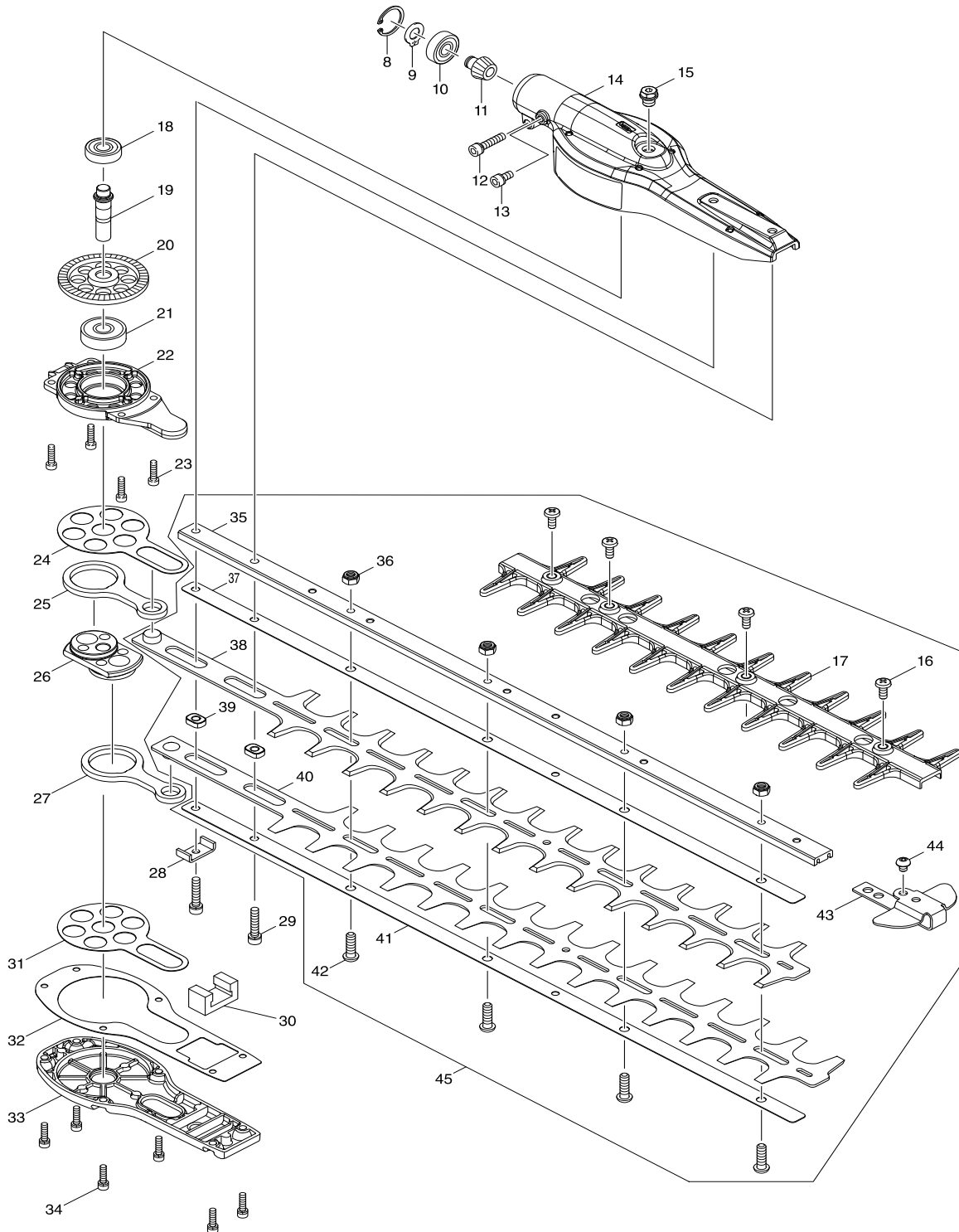


EN410MP



Products with multiple versions are listed in subsiding order with the newest version on top not indented.

Section	Fig. No.	Part No.	Description	EN410MP	Tech Bulletin	Notes
1	3	424434-7	CAP 24	1		
1	4	143825-0	GRIP PIPE COMPLETE	1		
1	5	961003-8	RETAINING RING S-7	1		
1	6	326754-4	SHAFT A	1		



Products with multiple versions are listed in subsiding order with the newest version on top not indented.

Section	Fig. No.	Part No.	Description	EN410MP	Tech Bulletin	Notes
2	8	962103-7	RETAINING RING R-24	1		
2	9	961005-4	RETAINING RING S-9	1		
2	10	210049-4	BALL BEARING 609ZZ	1		
2	11	227608-7	SPIRAL BEVEL GEAR 10	1		
2	12	922241-7	HEX. SOCKET HEAD BOLT M5X25	1		
2	13	922211-6	HEX. SOCKET HEAD BOLT M5X12	1		
2	14	143832-3	GEAR HOUSING COMPLETE B	1		
2	15	266818-1	HEX. SOCKET HEX. BOLT M8X8	1		
2	16	915211-3	BINDING HEAD SCREW M5X12	4		
2	17	454672-7	BLADE GUARD	1		
2	18	210049-4	BALL BEARING 609ZZ	1		
2	19	326257-8	SPINDLE	1		
2	20	227609-5	SPIRAL BEVEL GEAR 47	1		
2	21	211067-5	BALL BEARING 6200ZZ	1		
2	22	318972-8	BEARING HOUSING	1		
2	23	265490-6	HEX. SOCKET HEAD BOLT M4X16	4		
2	24	346658-4	PLATE	1		
2	25	346251-4	CONNECTING ROD	1		
2	26	332055-0	CRANK	1		
2	27	346251-4	CONNECTING ROD	1		
2	28	346256-4	HOLDER	1		
2	29	922241-7	HEX. SOCKET HEAD BOLT M5X25	2		
2	30	443159-4	SEAL	1		
2	31	346658-4	PLATE	1		
2	32	423457-2	GASKET	1		
2	33	318973-6	UNDER COVER	1		
2	34	922126-7	HEX. SOCKET HEAD BOLT M4X16	6		
2	35	332058-4	GUIDE BAR	1		
2	36	264089-4	HEX. LOCK NUT M6-10	4		
2	37	346665-7	PLATE	1		
2	38	725187-4	SHEAR BLADE	1		
2	39	313211-1	SLEEVE 5	2		
2	40	725187-4	SHEAR BLADE	1		
2	41	346665-7	PLATE	1		

Products with multiple versions are listed in subsiding order with the newest version on top not indented.

Section	Fig. No.	Part No.	Description	EN410MP	Tech Bulletin	Notes
2	42	266824-6	H.S. BUTTON HEAD BOLT M6X20	4		
2	43	346629-1	END COVER	1		
2	44	266075-1	HEX. SOCKET HEAD BOLT M5X6	1		
2	45	197768-8	SHEAR BLADE ASSEMBLY SET ME	1		INC. 16,17,35-44